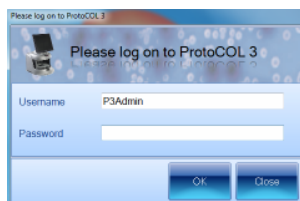


ProtoCOL 3 Colour Classification - Batch set-up Quick Guide

1 Start ProtoCOL 3 software

Enter



Log onto ProtoCOL 3

2 Position plate



Insert the plate holder, ensuring the plate holder that gives the best contrast between the zone and background is used



Place plate onto plate holder

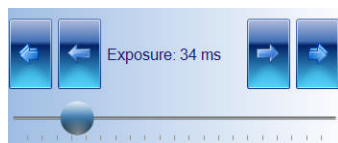
3 Capture image

Click



Select the image tab and check the live box

Slide



Adjust the exposure by increasing/decreasing the sliding scale

Click



Capture image

4 Create batch

Click



Click New Batch

5 Plate configuration

Click



Defaults are Circular plate 90mm
Sample volume 1ml
Change if necessary

6 Choose plate type

Select



Choose a plate type

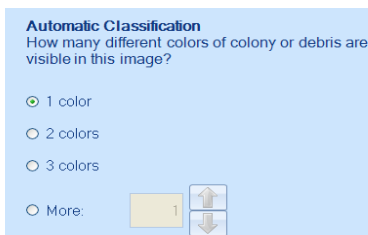
7 Colour classification

Select



➔ Select Colour Classification tab

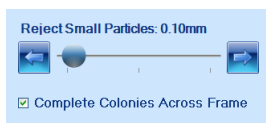
Select



➔ Automatic Classification default is 1 colour. If a total count is required keep 1 colour selected. If differentiation by colour is required select how many different colours are present on the plate

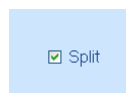
8 Classification results

Slide



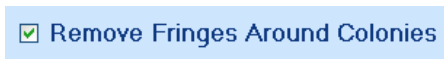
➔ Move slider to the left to accept small particles or to right to exclude small particles

Check



➔ If any colonies are touching select the split function

Check



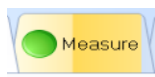
➔ To distinguish between two colours there may be a requirement to check Remove Fringes Around Colonies to make the colony appear as a solid colour

➔ Click Next

➔ Click Finish

9 Measure

Select



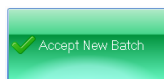
➔ Select the Measure tab

Click



➔ Test measure plate

Click



➔ Assign a plate identification template name

➔ Accept batch

Enter Designing Batch:

➔ Name the batch

ProtoCOL 3 is now ready to make the first measurement

CONTACT SYNBIOSIS:
EUROPE:
Tel: +44 (0)1223 727125
Email: support@synbiosis.com

USA:
Tel: 800 686 4451/301 662 2863
Email: support@synbiosis.com
www.synbiosis.com

P3CCBSU0112